



The NORTH STAR

Alma Lake – Moon Lake Protection and Rehabilitation District

Date: August 2018

Corliss Tischer, Newsletter Editor

Chairman's Chat

By Tony Waisbrot

"Nature is party to all our deals and decisions and she has more votes, a longer memory, and a sterner sense of justice than we do"—Wendell Barry

Many of you reading this, may not be aware that the Alma-Moon Lake District was formed in 1980 and lake data has been collected by volunteers for many of those years to establish a data base for our lakes to serve as a reference in case a problem develops in the future. This data, along with other lake information, is posted on our website: almamoonlake.org

Like all lake organizations, our lake district runs on volunteer power, from the five elected commissioners and an appointed commissioner from the Vilas Co. Board as well as an appointed commissioner from the Town of St. Germain to the committee chairpersons and volunteers who perform other projects such as lake sampling data, schedule social activities, create our newsletter and maintain our website.

Clyde Owens of Alma Lake, together with Ken Beier of Moon Lake have been collecting secchi disk water clarity studies as well as dissolved oxygen and other water chemistry studies to keep the science of our lakes current. Mary Platner of Moon Lake has collected water level data for years and has recently turned this task over to Milt Klingsporn who also developed and maintains our Lake District website, Corliss Tischer, a previous commissioner, serves as our newsletter editor and on the social committee with Terrie Beier, Marilyn Workinger and Audrey Lehner.

From May 2008-August 2010, the Lake District worked with Wisconsin DNR Science Services and Moon Beach Camp to improve 1,400 ft. of eroded shoreline through the development of rain gardens to prevent run-off as well as use of biodegradable erosion control products to reduce bank erosion and prevent large quantities of sediment from entering the lake during heavy rains. The shoreline was planted with native vegetation, including native trees, shrubs, and ground cover that are appropriate for the Moon Lake ecosystem.

When some of our lake residents noticed that the brush in the fish cribs placed on our lakes, was deteriorating, the commissioners hired a diver to rebrush the cribs on Moon Lake in 2012 and Alma Lake in 2013. Lake residents cut green brush and placed it on the shoreline or had it delivered to their shoreline by other lake residents so the brush could be placed in boats loaned from Moon Beach Camp and delivered to the diver at each crib for the diver to securely place in the cribs.

As always, the lake district commissioners, committee members and other volunteer residents encourage you, whether a new resident or long-term resident to be involved with the lake district activities to help you get to know your neighbors and to keep our lakes healthy and enjoyable.



Ann with cribs on the ice, winter 1981

There's Just Too Much Water For Some Trees to Handle!

There was concern about the trees that were turning brown by the channel and whether they were dying or diseased. Jill Nemec, Vilas County Forester, was contacted. After she examined the pictures that were provided by Tony Waisbrot, she stated that is just too much water for these trees to handle.

Jill said, "Most of the trees lining the bog areas and waterways appear to be white pine. Like I mentioned to you on the phone, white pine can handle somewhat wetter conditions, but we've had a couple of exceptional summers back to back with a lot of moisture (not to mention all the snow we had this year). The smaller white pine in the boggy areas started growing there when it was drier than it is now, and the trees were thriving because they had just enough moisture. As soon as those boggy areas began filling with more water, the trees started getting flooded out. If you drive around the area, you'll notice the same exact thing happening to trees in boggy areas and next to lakes. The needles will turn yellow/gold and eventually red."

Commissioner Elections

At the annual meeting on September 29th, 2018 at Moon Beach Camp elections will be held for 2 commissioners opening because Tony Waisbrot – Chairman and Milt Klingsporn – Commissioner and website manager both have their term expiring this year. If you are interested in becoming a Commissioner or would like to nominate someone, please contact on the Alma- Moon Lake Commissioners: Tony Waisbrot at 715-891-0896 or by email at twaisbrot@frontier.com; Sue Zauner at seam4@yahoo.com; Dave Zielinski at davezee1@frontier.com; Milt Klingsporn mklings@frontier.com; or Marilyn Workinger at marilyn.workinger@gmail.com. You can also make nominations at the meeting.

"Alma Moon Breakfast Club"

Why wait all year to have breakfast with your neighbors and friends. The AM Breakfast Club will be meeting monthly at the 3C's restaurant, 228 WI-70, St Germain, WI 54558, for breakfast on the second Saturday of each month at 9am. Anyone who is available or in town that Saturday is welcome and no RSVP is required. This is a great time to meet your neighbors and friends.

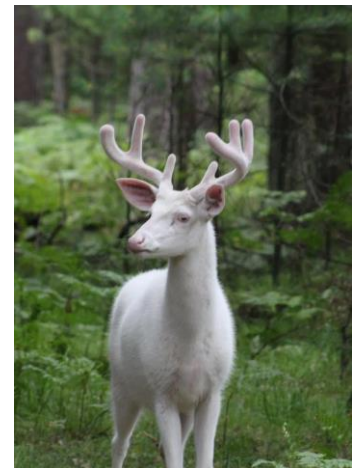
Alma-Moon Lake Update of Shoreline Habitat Project Town of Saint Germain Lakes

The Moon Lake Shoreline Habitat Project that occurred from 2008-2009 was revisited by the fisheries management staff from the WDNR office in Woodruff to assess the status of the habitat project 10 years after completion.

The staff was primarily interested in the half log condition and fish use as well as the tree drop condition and fish use. They also wanted to evaluate several types of bolts that were used at the time to see how they would hold up. Needless to say, the stainless steel looked like new, but the galvanized timber bolts and zinc plated steel bolts were rusty and corroded.

Due to high water levels and a rainy spring, the visibility of the usually clear lake was reduced so the staff ended up snorkeling to complete their task.

They were able to locate 21 of the 22 half log structures, all of the boulders from the tree drops as well as four fish cribs that had been previously placed.



Albino Buck. Photo taken by Ann Waisbrot August 2018

Summary of Results

Half logs

This had been part of a cooperative, federally funded shoreline habitat research project along the east shore of Moon Lake for 1400 ft. Each half log was labeled so they knew bolt type and approximate location.

8 of the 21 half logs were tipped and at least one of the tipped half logs still showed signs of fish use. They re-positioned all tipped logs so they were upright again. No half logs were tipped and covered with debris. Sand and gravel were the most common substrates observed.

Depth and distances from shore had increased due to high water levels, but angle off the perpendicular from shore was always less than 20 degrees.

Tree drops

All 4 tree drops were located with 1 tree still anchored in the rocks, 2 trees not located along the shoreline, 1 untethered tree found slightly down shore from the rock anchor, 1 naturally fallen tree near site with missing tree and good shoreline woody habitat was still present. Fish were observed using all of the improvements and woody habitat.

For further information and photos, go to our website almamoonlake.org and click on lake data then updates 2017.

2018 Lake Updates

Fish Stocking: This year on June 22nd the WDNR stocked Alma with 2,021 and Moon with 4,340 small walleye fingerlings (1 1/2 to 2 ") as part of the Lake District's effort to continue to work with the DNR in order to maintain a quality fishery on our lakes. The DNR stocks fingerling walleye every other spring in our lakes and 10-12 inch musky every other fall.

Loons and Eagles: Our Loons had one hatching this year and our Eagles had one eaglet.

Albino and White Bucks: Our albino buck is beautiful and very majestic and there is also a white buck with brown markings on his head. I hope you all get the opportunity to see each of them.



Eagles Nest. Photo by Ann Waisbrot



Walleye Stocking June 22, 2018.
Photo by Ann Waisbrot



White 8 point buck with brown head. Photo
Taken by Corliss Tischer

Alma Lake – Moon Lake Protection and Rehabilitation District Socials

Marilyn Workinger, Terri Beier, and Audrey Lehner did a wonderful job coordinating this year's summer picnic and Chicken BBQ on August 4th at the Bull Pen, which used to be the Twilight Bar & Grill. A big THANK YOU goes to Marilyn Workinger, Terri Beier, and Audrey Lehner for making our get-together such a wonderful time.



Annual Meeting is Saturday, September 29th at Moon Beach Camp

Our speaker this year is Conservation Specialist Quita Sheehan with the Vilas County Land and Water Conservation Department. Since 2010, Quita has been providing technical assistance to the public on water quality protection methods, including the design and installation of shoreland restoration projects. She works with Land Owners, Lake Organizations, and other groups to take care of the waters, wetlands, and uplands of Vilas County. By training, Quita is a plant ecologist, and loves to explore and share with others, our native plants and eco-systems, native gardening, and how they all work together. She is also happy to identify plants for people or just look at pictures that anyone wants to share!

- 11:30 am: Registration and social time
- 12:00 pm: Lunch, which is a fabulous Moon Beach salad and Taco bar for only \$10.00. You **do not** need to have lunch to attend the program and annual meeting.
- Please RSVP by September 15th to Terrie Beier at 715-479-9339, her cell # 715-891-2705 or her email her at ktbeier@frontier.com.
- 1 pm: Annual Meeting will start

More Wood Makes it Good

Fish in our lakes relate to wood. Find logs lying on the bottom or a fallen tree in the water and chances are you'll find fish.

Fisheries biologists increasingly see wood in the water as essential to improving fish habitat. They're not talking about cribs made of logs stuffed with brush out in deeper water, since these mainly concentrate fish. They advocate whole trees in the water as the maze of branches provides cover young fish need to escape from predators and grow into adults.

Lakefront homeowners typically removed wood from their frontage to improve the swimming area or make room for piers. They would cut up and take away trees that fell into the water. As a result many shorelines are nearly devoid of wood and research suggests that this seriously hinders the development of healthy fisheries.

The technical name for logs and trees in the water is coarse woody habitat. Recent research by the Department of Natural Resources shows that its impact on fish life can be profound. Thus, the DNR is promoting the addition of wood under its Healthy Lakes Initiative.

Specifically, the agency offers grants for placing "fish sticks"—clusters of downed trees anchored to the shore and partially or fully submerged. As lake residents, we can do our part to improve the fishery on our lakes by not removing wood from the shoreline area and allowing nature to add to the coarse woody habitat when trees fall into the lake.

Remember, "wood makes the fishery good!"

Town of St. Germain and Area Information

Town of St. Germain website has been updated and you can now be placed on an email list for the town to send notices. You can get on the list by emailing townofstgermain@gmail.org.

St. Germain Recycling and Garbage Disposal Hours:

Summer: Memorial Day thru Labor Day open:

Wed/Sat 8:00 am - 2:00 pm

Winter: Wednesday after Labor Day thru Sunday prior to Memorial Day open:

Wed 8:00 am - 12:00 pm

Sat 8:00 am - 2:00 pm

Town of St. Germain Web Site: <http://www.townofstgermain.org>

Vilas County Web Site: www.co.vilas.wi.us/

Bo-Boen Snowmobile Club Web Site: www.boboен.com

St. Germain ATV Club Web Site: www.saintgermainatvclub.com/

St. Germain Events Web Site: <http://stgermainwi.chambermaster.com/events>

Save the date: Upcoming 2018 Socials and Meeting

Social Dates

AM Club at 3C's, 228 WI-70, St Germain, every second Saturday of the month at 9am.

Meeting Dates

Annual Meeting on Saturday, September 29, 2018. 11:30 am – Registration, 12 pm – Lunch, 1 pm – Annual Meeting

District Commissioners

Tony Waisbrot (term of 2018) – Chairman, twaisbrot@frontier.com
Sue Zauner–(term of 2019) - Secretary, seam4@yahoo.com
Dave Zielinski (term of 2019) –Treasurer, davezee1@frontier.com
Milt Klingsporn (term of 2018) - Commissioner, mklings@frontier.com
Marilyn Workinger (term of 2020) - Commissioner, marilyn.workinger@gmail.com
Tom Christensen -Town of St Germain Representative, stgsport@frontier.com
Ronald Kressin - County Representative, rockers@co.vilas.wi.us

For more information about our lakes and the Alma - Moon Lake District visit our web site at
<http://www.almamoonlake.org/>

Meet your Commissioners

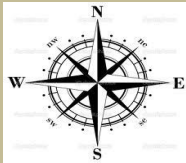


From left to right, Ronald Kressin, Milt Klingsporn, Tony Waisbrot, Dave Zielinski, Marilyn Workinger, and Sue Zauner

Mission Statement

The mission of the Lake District is the preservation of Alma/Moon lakes natural beauty and quiet environment for the future generations. The focus will be to maintain the highest water quality and protect the natural shoreline through proactive participation in the protection of aquatic contamination and watershed erosion while supporting both fish and wildlife habitat. Communication of the activities to all Lake District members and the solicitation of their involvement and cooperation will be primary in the conducting of this mission. All Lake District sponsored activities will always be performed under the direction of current federal, state, and local regulations.

Alma Lake – Moon Lake Protection and
Rehabilitation District
P.O. Box 145
St. Germain, WI 54558



The NORTH STAR

Alma Lake – Moon Lake Protection and Rehabilitation
District

I
N

T
H
I
S

I
S
S
U
E

Chairman's Chat	Pg. 1
Too Much Water	Pg. 2
Commissioner Elections	Pg. 2
Breakfast Club	Pg. 2
Shoreline Habitat Project Update	Pg. 2
Lake Updates	Pg. 3
Alma – Moon Social	Pg. 4
Annual Meeting Information	Pg. 4
More Wood Makes It Good	Pg. 4
Town of St. Germain and Area Information	Pg. 5
Save the Date, Socials and Meetings	Pg. 5
Commissioners	Pg. 5
Mission Statement	Pg. 5