



The NORTH STAR

Alma Lake – Moon Lake Protection and Rehabilitation District

Date: August 2019

Sue Zauner, Newsletter Editor

Chairman's Chat

By Tony Waisbrot

*"Only when the last tree has been cut down, Only when the last river has been poisoned,
Only when the last fish has been caught, Only then will you find that money cannot be eaten."
-Cree Indian Prophecy*

As we enjoy summer returning to the Northwoods and relish a new season of recreation and enjoyment of our lakes, it's worth keeping in mind that the beauty and vitality of our lakes is truly a special endowment of nature. We take for granted the pristine quality and recreational value of our sparkling gems, Alma and Moon lakes.

According to US government studies, nearly half of our nation's rivers and streams and more than one-third of our lakes are polluted and unfit for swimming, fishing, and drinking. That is the reality elsewhere and that's why our Lake District was formed in 1980 to preserve, protect, and enhance the waters of our seepage lakes.

At our 2018 annual Lake District meeting and luncheon, the program speaker, Quita Sheehan, conservation specialist with the Vilas County Land and Water Conservation Department, indicated that her department determined that 75% of the assessed value of all taxable property in the county was waterfront residential property which provided 75% of the tax revenues (46.7 million dollars) and the research has begun to show that the clearer the water, the more valuable the property became.

Over the past 38 years your lake district has been involved in many projects to protect and increase water quality and clarity as well as monitor water variables and enter data into the Citizens Lake Monitoring Network in cooperation with the Wisconsin Dept. of Natural Resources.

Last year, the Moon Lake shoreline habitat project that occurred from 2008-09 was revisited by the fisheries management staff from the WDNR office in Woodruff to assess the status of the habitat project 10 years after completion. This year, we are contracting with Onterra, LLC to update the aquatic plant management plan which was initially completed in 2010.

We have worked to obtain funding for the project from The St. Germain Town Lakes Committee that was formed in 2003 and along with this committee, have obtained a WDNR state grant for the project. As part of this project, we will be required to update our Lake Management Plan, in part, by surveying our lake residents regarding their property as was done in forming the original lake management plan.

So look for a survey in the mail and please complete it for the Lake District. When the last survey was conducted in 2010, our lakes had the highest rate of return at 67% of the lakes in the Town of St. Germain. When you complete the survey, you become an active stakeholder in the project.

For more Lake District information, please visit our website: almamoonlake.org

Own Your Wake on Moon Lake

Because of the high water, our lakes are more vulnerable now to shoreline damage from boat wakes caused by speeding boats themselves and boats towing tubers and water skiers at high speeds. Wisconsin state law prohibits using a motorboat that creates a hazardous wake or wake conditions and states that the operator of a motor boat is liable for any damage caused to the person or property of another by wash or wake. This also applies to erosion of property.

Please remember to observe slow no wake rules within **100 feet** of all shorelines, other boaters and swimming rafts. Vessels towing persons may not come within **100 feet** of other vessels, persons in the water or a swimming area. Persons being towed behind a vessel on water skis, a surfboard, or the device, or their towing rope may not come within **100 feet** of a personal water craft (PWC).

A personal watercraft operator may not tow a person on water skis or other devices unless the PWC is designed and recommended by the manufacturer to accommodate at least three people **and...** a competent observer is on board and facing backward toward the person being towed.

A personal watercraft may not be operated at faster than “slow, no wake” speed within: **100 feet** of any other vessel, **100 feet** of a dock, pier, raft or restricted area on any lake and **200 feet** from shore on any lake.

All watercraft are also asked to stay **200 feet** away from loons on the lake as noted on the posted Loon Alert signs by the Lake District.

Some governmental bodies have enacted automatic slow no wake laws when the water reaches a certain height because of the damage to shorelines, nesting areas and fish spawning beds. Since this is not the case in our area, please boat courteously and be aware of the property of others. Our township waters are patrolled.

No wake hours on Moon Lake start at **5:00 pm daily and end at 10:00 am daily**. If you enjoy the water sports that require speed and create wakes, please stay toward the center of the lake and away from shorelines to allow the wake to diminish before it hits the shoreline in order to minimize damage during these high water years.



Annual Meeting is Saturday, August 31th at Moon Beach Camp

Our speaker this year is Ted Rulseh author of a new book, [A Lakeside Companion](#) and he writes the “The Lake Where You Live” column for the Lakeland Times. Ted is also active in lake-advocacy organizations, including the Wisconsin Citizen Lake Monitoring Network as well as the editor and publisher of several books on the Great Lakes Region and he is the author of [On the Pond: Lake Michigan Reflections](#). He lives on Birch Lake at Harshaw in Oneida County.

- 11:15 am: Registration and social time / 12:00 pm: Lunch / 1:15 pm: Annual Meeting will start
- Lunch is a fabulous Moon Beach Beef Taco bar, salad bar and dessert for only \$10.00.
- You **do not** need to come to lunch to attend the program and annual meeting.
- Please RSVP by August 15th to Terrie Beier at 715-479-9339, her cell # 715-891-2705 or her email at ktbeier@frontier.com.

Lake Tides is now available online!

Check it out at www.uwsp.edu/uwexplakes under Newsletter.

Commissioner Elections

At the annual meeting on August 31th, 2019 at Moon Beach Camp elections will be held for 2 commissioner openings because Sue Zauner – Secretary and Dave Zielinski – Treasurer both have their term expiring this year. If you are interested in becoming a Commissioner or would like to nominate someone, please contact one of the Alma- Moon Lake Commissioners: Tony Waisbrot at 715-891-0896 or by email at twaisbrot@frontier.com; Sue Zauner at seam4@yahoo.com; Dave Zielinski at davezee1@frontier.com; Milt Klingsporn mklings@frontier.com; or Marilyn Workinger at marilyn.workinger@gmail.com. You can also make nominations at the meeting.

2019 Loon Nest Failure

Tony Waisbrot, Chairman of the Lake District Commissioners reports that many Lake Residents have been contacting him with their concern that the loon pair on our lake did not successfully hatch a loon chick or two this year. There have been successful hatches for a number of years in a row (with all the excitement around the sighting of new chicks, it's amazing that our lake residents don't send out birth announcements).

Many residents have been concerned that with the high water, more and larger boats have had access to Engle Bog Lake where the Lake District has placed the loon hatching platform and that has resulted in a disturbance to their nesting. However, it's beginning to look like we are not alone in lack of nesting success in northern Wisconsin.

John Bates, well known naturalist, author and nature guide noted in one of his recent columns in The Lakeland Times, "Northwoods Almanac" that he has been paddling a number of undeveloped, wild lakes in Vilas, Oneida and Iron counties (22 so far) and he has seen loon adults but no loon chicks. None. Nada.

Bates also reports that Loon Research Scientist, Walter Piper apparently has noted the same thing the loon nests he and his crew and his volunteers monitor in Oneida County. In his most recent Blog, Walter writes, "Owing to a late ice-out, a lengthy period of black fly abundance, and perhaps other factors we have not detected, **2019 has been a dismal year for loon breeding in northern Wisconsin**—only about a quarter of our lakes have produced young in in 2019; last year it was over half."

So, we are not alone in nest failure this year. Even in places where there was no increase in human activity, there was an increased rate of nest failure this year. However, there is also another concern for loons. Earlier this month the Veterinary Diagnostic Laboratory at the University of Minnesota confirmed West Nile Virus as the cause of death in two of three dead loons from northeastern Minnesota.

WNV was first confirmed in Minnesota in 2002 and was documented as a cause of loon mortality in Minnesota as early as 2005. John Bates reports it is not uncommon for people, animals and birds to be exposed to WNV through mosquito bites, but some birds, like loons, crows and other corvids, are especially susceptible to the infection.

If you observe any problems or have questions about the loons on our lake, contact your Lake District official Loon Ranger, Terrie Beier, 715-891-3735 for information or assistance.

Alma Lake – Moon Lake Protection and Rehabilitation District Social



Summer Picnic

A big THANK You goes to Marilyn Workinger, Terrie Beier, and Claire Pagel for making our summer picnic such a wonderful time. The picnic was held on July 20th at the Sportsman's Chalet.



Summer Picnic

John Bates Blog – Check it out!

John is a well-known naturalist, author and columnist for the Lakeland Times and previous program speaker at one of our Lake District Annual meetings now has a blog that provides a great deal of information on the Northwood's area.

<http://manitowishriver.blogspotcom/>



Alma-Moon Lake District WDNR Surface Water Grants History

Many Lake District residents ask about the benefits of having a lake district and one of the benefits is that lake districts can represent lake residents and be involved in lake protection or improvement activities. For instance, our lake district, which was formed in 1980, has partnered with the Wisconsin Department of Natural Resources (WDNR) to obtain grant money for lake improvement projects.

After the St. Germain Town Lakes Committee was formed in 2004 to fight aquatic invasive species (AIS) and later in 2016 to expand its scope of interest to managing and improving the lakes in the town, our lake district represented our residents at town lakes meetings which included the four other lake organizations, Big St. Germain, Little St. Germain, Found and Lost Lakes. As a result, we also became eligible to share in funds budgeted for the Town Lakes Committee.

Since 1991, The Alma- Moon Lake District has received **\$117,868.93** in WDNR grants for lake water quality monitoring projects and lake improvement projects. We also know now that the current lake management project being conducted by Onterra, LLC will be mostly funded by a combination of a combined amount of **\$14,300** received through grants from WDNR and the St. Germain Town Lakes Committee.

We are of course, all part of a larger picture. In response to a growing awareness of the harmful effects of pollution and the decline of the Quality of Wisconsin lakes, a major 6 year demonstration project was conducted by the University of Wisconsin-Extension and the Wisconsin Department of Natural Resources (WDNR). In reply to the project's recommendations, the Legislature enacted a 1974 law aimed at solving inland lake issues.

Chapter 33 of the Wisconsin Statutes was created to provide for the formation of a new kind of lake management organization-the public inland lake protection and rehabilitation district. The 1974 law also established a state educational assistance and cost-sharing program for lake management organizations. And our forward-looking lake residents were so fond of our lakes that they formed one of the first lake districts in 1980 just 6 years after the 1974 law was passed. Not only that, this was one of the first lake districts formed on a preventive basis-other lake organizations were formed because of severe problems and a decline in the quality of their lakes.

Your voluntarily elected Lake District Commissioners and ecologically motivated lake residents, are truly the lifeblood of the lake stewardship movement in Wisconsin and our remarkable partnership with WDNR and UW Extension Lakes is the envy of other states.

2019 Lake Updates

Fish Stocking: This year on July 1st the WDNR stocked Alma & Moon with 6,500 small walleye fingerlings (1 1/2 to 2") as part of the Lake District's effort to continue to work with the DNR in order to maintain a quality fishery on our lakes. The DNR stocks fingerling walleye every other spring in our lakes and 10-12 inch musky every other fall.



Nancy Hack and Len Larson's grandson, Sam, assist Hunter from WDNR Woodruff fish hatchery.



Transferring walleye fingerlings from the WDNR vehicle to buckets so the fingerlings can be weighed by the pound to determine the number of fingerlings.



Tony Waisbrot from Moon Lake transferring fingerling walleye from the bucket to Alma Lake after they have been weighed to determine the number of walleye.



Clyde Owens and Stan Haack stocking the 12 inch muskies from the WDNR in October 2018.

Improved Ambulance Service in St. Germain

St. Germain ambulance staff upgrades to paramedic level. While operating at the EMT level during most of its first year of operation, which began July 3, 2018, the upgrade is now offering the paramedic level of care when the paramedic is available.

Blooming in the Channel to Engle Bog Lake in early June



Sweet Gale (aka meadow fern)



Water Arum (aka Cala Lilly)

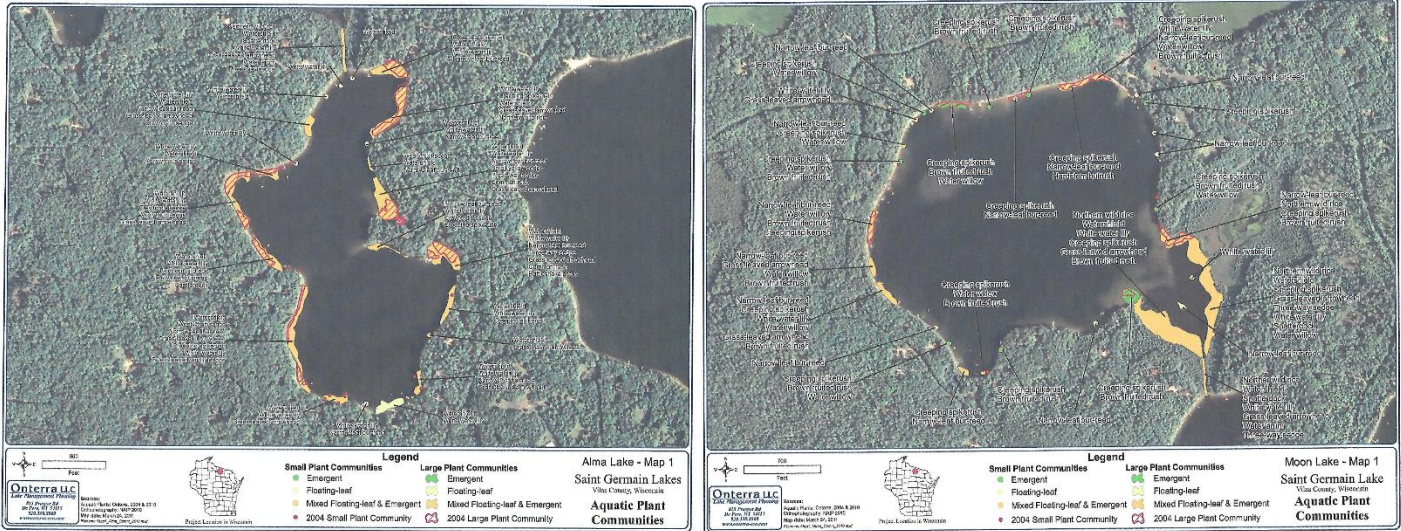


Bog Laurel



Labrador Tea

Alma and Moon Lake Plant Community Survey



These photos show the results of the aquatic plant point- intercept survey as well as the floating-leaf and emergent plant community mapping survey for both lakes completed by Onterra in August 2010.

During these surveys, 30 species of native aquatic plants were located on Alma Lake. This species richness greatly exceeds the Northern Lakes Ecoregion and Wisconsin State medians.

Moon Lake Surveys located 33 species of native aquatic plants. The species richness in Moon Lake also greatly exceeds the Northern Lakes Ecoregion and Wisconsin State medians.

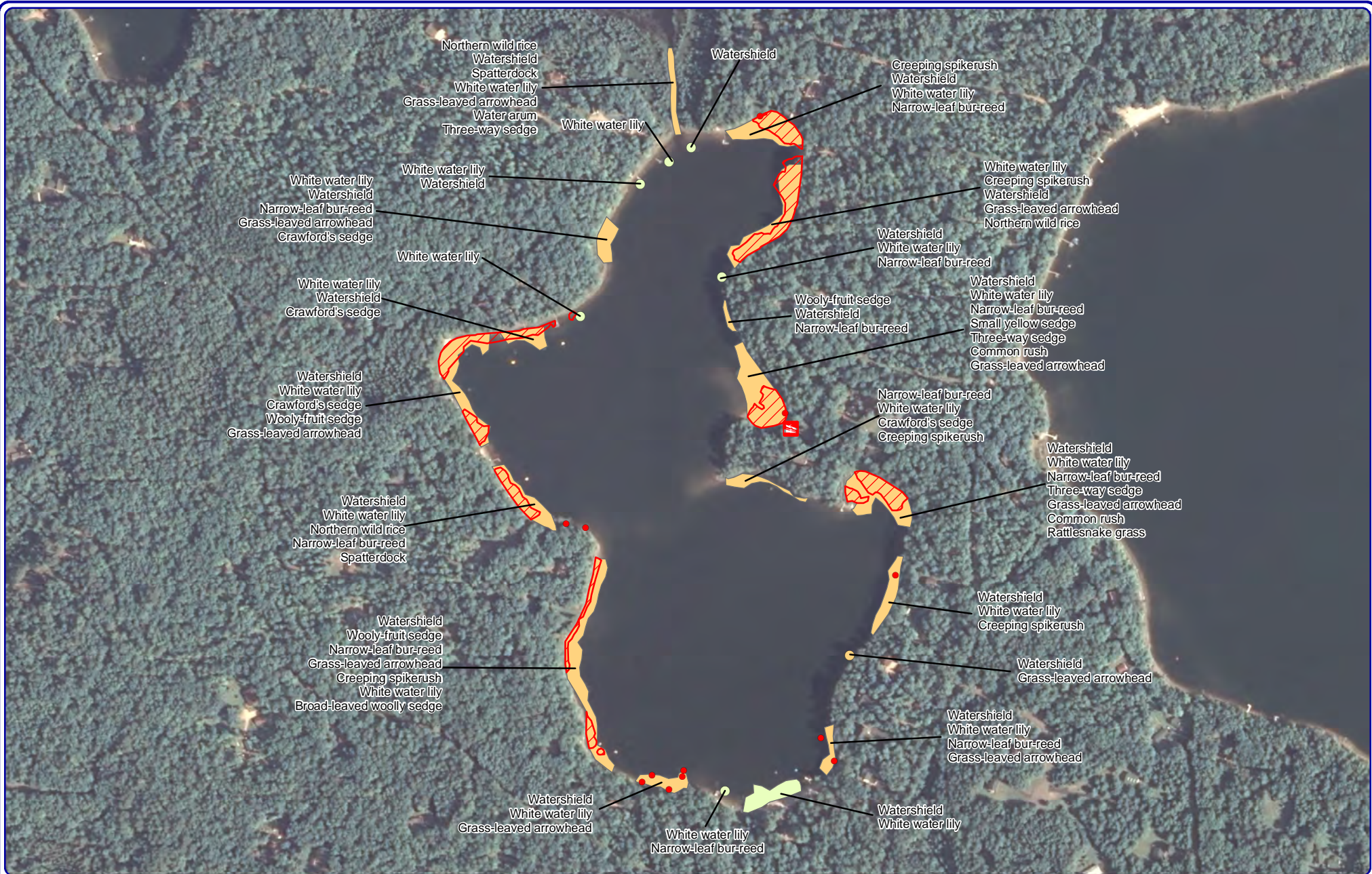
These community map “snapshots” of the emergent and floating-leaf plant communities can be replicated over time. Onterra conducted these surveys in 2004, 2010 and will conduct their surveys this year, August 2019. In order to provide a valuable understanding of the dynamics of these plant communities in our lakes this is important because these communities are often negatively affected by recreational use and shore land development.

Radomski and Goeman (2001) found a 66% reduction in vegetation coverage on developed shorelines when compared to undeveloped shorelines in Minnesota Lakes. Furthermore, they also found a significant reduction in abundance and size of northern pike, bluegill and pumpkinseed associated with these developed shorelines.

Overall, the land use within Alma and Moon Lake’s watershed is that which export little pollution to the lakes. Forested lands allow the water to seep into the ground, and thus reduce the amount of overland flow which might carry sediments and pollutants into the lakes. In addition, with the help of Mike Meyers from the WDNR, our lake district has restored areas of disturbed shoreline in an effort to reduce pollution to the lake from particularly sensitive areas of the watershed.

Our seepage lakes receive water only through groundwater inputs, surface runoff and precipitation; of which groundwater is normally most important so our lakes may be more vulnerable to water level fluctuations. However, while water level fluctuations may have negative recreational and short-term ecological impacts, it’s important to remember that lake water level fluctuations are part of a naturally occurring cycle and may actually benefit the lake ecosystem in the long term by actually increasing the level of habitat diversity

Onterra will complete the 2019 studies this summer and will have a new report on the recent studies toward the end of the year. However, it is important to note that preliminary studies already completed this year did not locate any occurrences the exotic plant, curly-leaf pondweed. Eurasian water milfoil, also an aquatic invasive plant, was not located in our lakes as well as in past surveys in 2004 and 2010.



Onterra LLC
Lake Management Planning
815 Prosper Rd
De Pere, WI 54115
920.338.8860
www.onterra-eco.com

Sources:
Aquatic Plants: Onterra, 2004 & 2010
Orthophotography: NAIP 2010
Map date: March 24, 2011
Filename: Map1_Alma_Comm_2010.mxd



Project Location in Wisconsin

Legend

Small Plant Communities

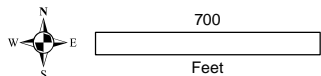
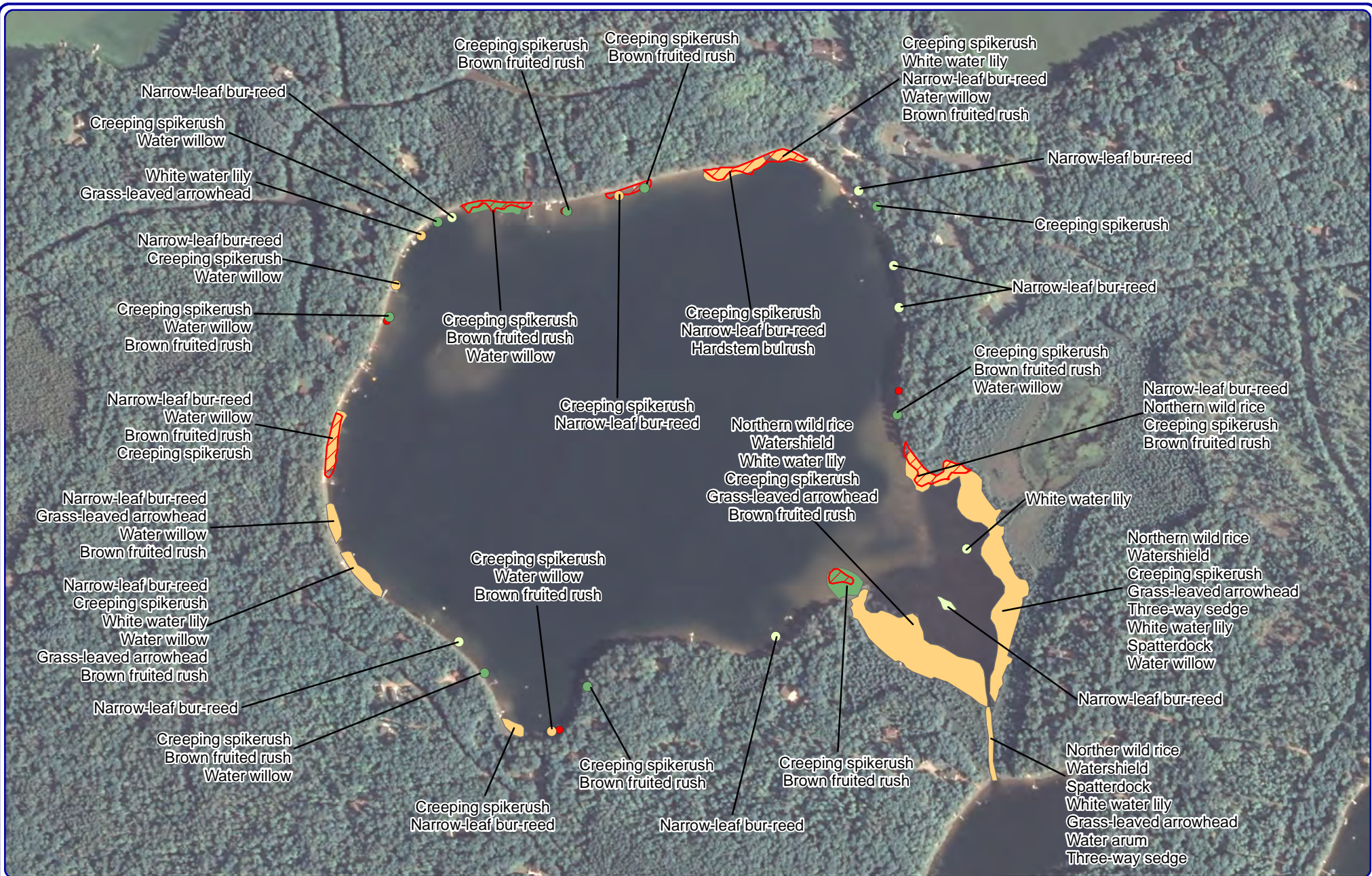
- Emergent
- Floating-leaf
- Mixed Floating-leaf & Emergent
- 2004 Small Plant Community

Large Plant Communities

- Emergent
- Floating-leaf
- Mixed Floating-leaf & Emergent
- 2004 Large Plant Community

Alma Lake - Map 1
Saint Germain Lakes
Vilas County, Wisconsin

**Aquatic Plant
Communities**



Onterra LLC
Lake Management Planning
815 Prosper Rd
De Pere, WI 54115
920.338.8860
www.onterra-eco.com

Sources:
Aquatic Plants: Onterra, 2004 & 2010
Orthophotography: NAIP 2010
Map date: March 24, 2011
Filename: Map1_Moon_Comm_2010.mxd



Legend

Small Plant Communities

- Emergent
- Floating-leaf
- Mixed Floating-leaf & Emergent
- 2004 Small Plant Community

Large Plant Communities

- Emergent
- Floating-leaf
- Mixed Floating-leaf & Emergent
- 2004 Large Plant Community

Moon Lake - Map 1
Saint Germain Lake
Vilas County, Wisconsin
**Aquatic Plant
Communities**

Town of St. Germain and Area Information

Town of St. Germain website has been updated and you can now be placed on an email list for the town to send notices. You can get on the list by emailing townofstgermain@gmail.org.

St. Germain Recycling and Garbage Disposal Hours:

Summer: Memorial Day thru Labor Day open:

Wed/Sat 8:00 am - 2:00 pm

Winter: Wednesday after Labor Day thru Sunday prior to Memorial Day open:

Wed 8:00 am - 12:00 pm

Sat 8:00 am - 2:00 pm

Town of St. Germain Web Site: <http://www.townofstgermain.org>

Vilas County Web Site: www.co.vilas.wi.us/

Bo-Boen Snowmobile Club Web Site: www.boboens.com

St. Germain ATV Club Web Site: www.saintgermainatvclub.com/

St. Germain Events Web Site: <http://stgermainwi.chambermaster.com/events>

Save the date: Upcoming 2019 Socials and Meeting

Social Dates

Alma Moon Breakfast Club at 3C's restaurant, 228 WI-70, St Germain, occurs year round on the second Saturday of the month at 9am. No RSVP required.

Meeting Dates

Annual Meeting on Saturday, August 31, 2019.

11:15 am – Registration, 12 pm – Lunch, 1:15 pm

– Annual Meeting

District Commissioners

Tony Waisbrot (term of 2021) – Chairman, twaisbrot@frontier.com

Sue Zauner–(term of 2019) - Secretary, seam4@yahoo.com

Dave Zielinski (term of 2019) –Treasurer, davezee1@frontier.com

Milt Klingsporn (term of 2021) - Commissioner, mklings@frontier.com

Marilyn Workinger (term of 2020) - Commissioner, marilyn.workinger@gmail.com

Tom Christensen -Town of St Germain Representative, stgsport@frontier.com

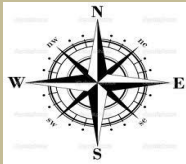
Ronald Kressin - County Representative, rockers@co.vilas.wi.us

For more information about our lakes and the Alma - Moon Lake District visit our web site at <http://www.almamoonlake.org/>

Mission Statement

The mission of the Lake District is the preservation of Alma/Moon lakes natural beauty and quiet environment for the future generations. The focus will be to maintain the highest water quality and protect the natural shoreline through proactive participation in the protection of aquatic contamination and watershed erosion while supporting both fish and wildlife habitat. Communication of the activities to all Lake District members and the solicitation of their involvement and cooperation will be primary in the conducting of this mission. All Lake District sponsored activities will always be performed under the direction of current federal, state, and local regulations.

Alma Lake – Moon Lake Protection and
Rehabilitation District
P.O. Box 145
St. Germain, WI 54558



The NORTH STAR

Alma Lake – Moon Lake Protection and Rehabilitation
District

**I
N

T
H
I
S

I
S
S
U
E**

Chairman's Chat	Pg. 1
Own Your Wake on Moon Lake	Pg. 2
Annual Meeting Information	Pg. 2
Lake Tides Online	Pg. 2
Commissioners Elections	Pg. 3
Loon Nest Failure	Pg. 3
Alma – Moon Social	Pg. 3
John Bates Blog	Pg. 4
Lake District WDNR Surface Water Grants	Pg. 4
Lake Updates	Pg. 5
Improved Ambulance Service	Pg. 5
Blooming in the Channel to Engle	Pg. 5
Plant Community Survey	Pg. 6
Town of St. Germain and Area Information	Pg. 7
Save the Date, Socials and Meetings	Pg. 7
Commissioners	Pg. 7
Mission Statement	Pg. 7